

FREEHOLD



House - Detached (EPC Rating:)

**PRAMUKH KRUPA CHORLEYWOOD ROAD,
RICKMANSWORTH, WD3 4EN**
Reduced To

£2,750,000



HAYMILLS
Expertise Experience Engagement



8



6



4



8 Bedroom House - Detached located in Rickmansworth

8 BEDROOM 5 RECEPTION & 6 BATHROOM detached house on Chorleywood Road in Rickmansworth! This impressive property boasts 5 reception rooms, providing ample space for entertaining guests or simply relaxing with the family. Built in approx. 1950, this charming house exudes character and history, offering a unique blend of traditional architecture with modern amenities. The 6,092 sq ft of living space provides a grandeur that is sure to impress even the most discerning buyer. One of the standout features of this property is the parking space available for 4 vehicles, ensuring convenience for you and your guests. Whether you have a growing family or simply love to host gatherings, this house offers the perfect setting for creating lasting memories. Located in the picturesque town of Rickmansworth, you'll enjoy a peaceful and serene environment while still being within easy reach of local amenities and transport links. Don't miss out on the opportunity to make this magnificent house your new home!

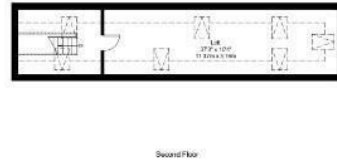
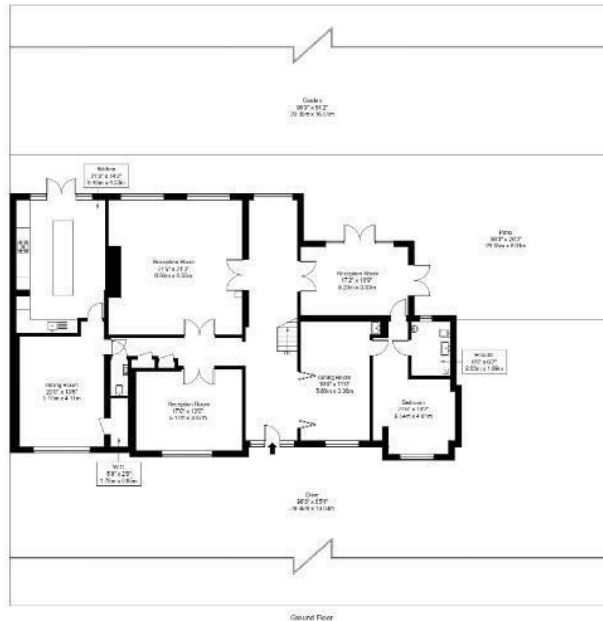


Chorleywood Road, WD3 4EN

Approx Gross Internal Area = 439.63 sq m / 4732 sq ft

Patio = 126.36 sq m / 1360 sq ft

Total = 565.99 sq m / 6092 sq ft



Ref :

Copyright **BLEUPLAN**

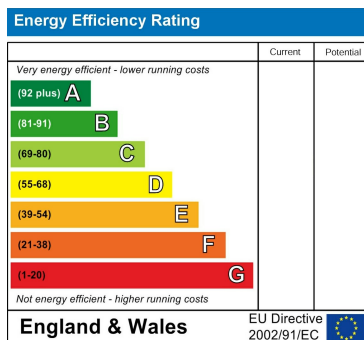
The Floor plan is not to scale and measurements and areas shown are approximate and therefore should be used for illustrative purposes only. The plan has been prepared in accordance with the RICS code of Measuring Practice and whilst we have confidence in the information produced it must not be relied on. Maximum lengths and widths are represented on the floor plan. If there is any aspect of particular importance, you should carry out or commission your own inspection of the property.

Copyright @ BLEUPLAN

Council Tax Band

H

Energy Performance Graph



Call us on

0208 904 8822

info@haymills.uk

Agents Note: Whilst every care has been taken to prepare these particulars, they are for guidance purposes only. All measurements are approximate and are for general guidance purposes only and whilst every care has been taken to ensure their accuracy, they should not be relied upon and potential buyers are advised to recheck the measurements.



HAYMILLS
Expertise Experience Engagement